



# Pass Protection Schemes

## The Installation of Pass Protection Schemes



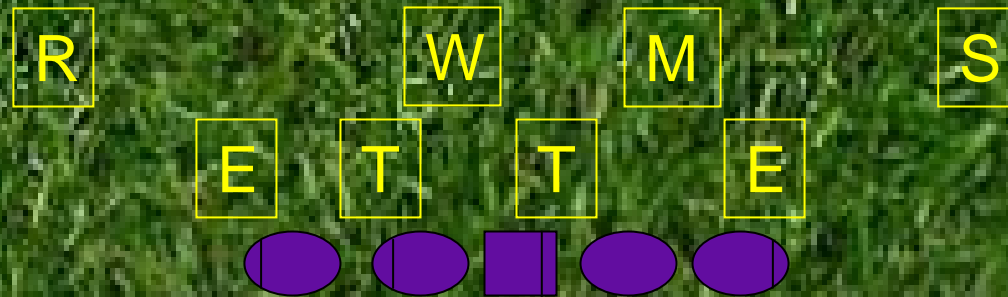
# Base Protection Concepts

- Big On Big
- Slide Protection/Turn back Protection
- Zone Schemes
- Man/Zone Schemes
- 5 Man Protection
- 6 Man Protection
- 7 Man Protection
- Max Protection

# Big on Big Protection

- We work to the half-man advantage.
- We work a half-man to our outside.
- Our uncovered lineman will be our double read player.
- Our offensive line must communicate.
- We want to protect against the most immediate threat first.

# Big On Big Concepts vs. a 4-4 front

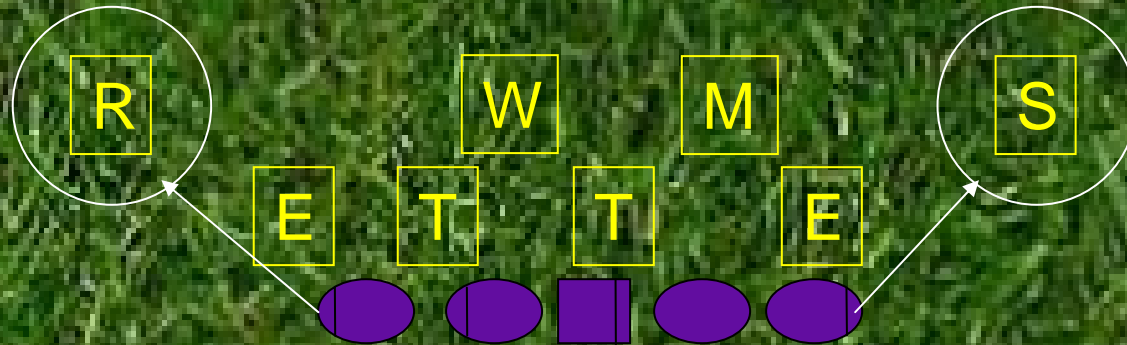


- Our center will work to his most inside threat in Big on Big Protection- He will make a Right Call in the case above
- The RG is uncovered and will be our double read player.
- The LG, LT, and RT will work to the half-man, which is the shade player.

# Concepts of Big on Big Protection

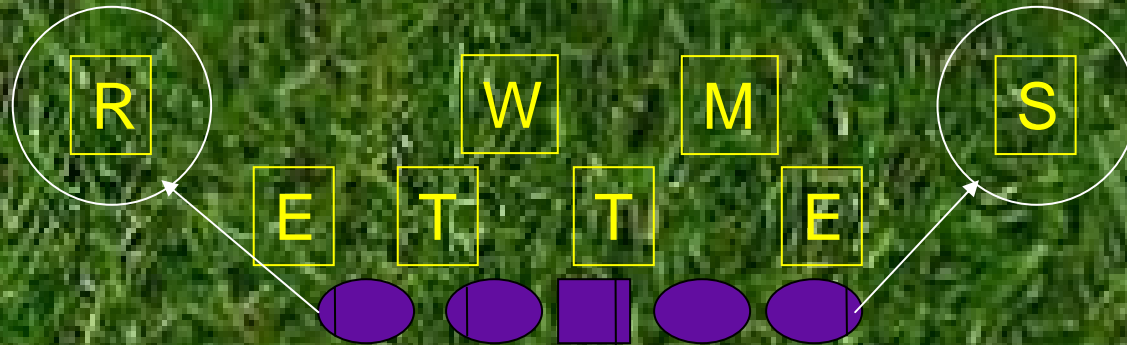
- The Center will make a Riggin or Liggin call. Riggin puts the center to the right, Liggin to the left.
- Our tackles must make a tough or a soft call.
- We must work to the half-man to our outside.
- We must understand that you can't block everyone, but you can account for them.

# Understanding Tough and Soft



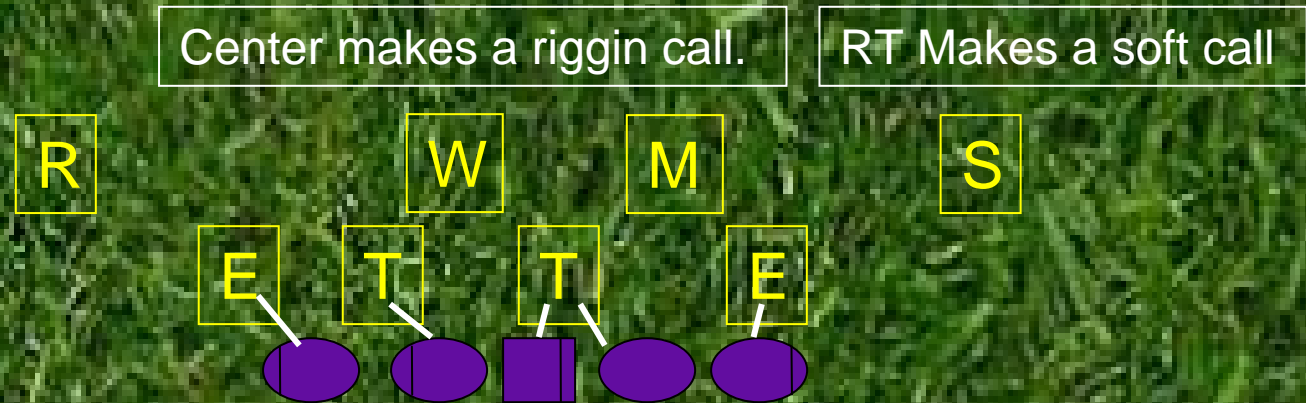
- Tackles will call tough or soft based on the alignment of the inverts.
- The inverts are the overhang players (Usually strong safeties or outside backers).
- Tough tells the guard the overhang player is on the line and is a blitz threat.
- Soft tells the guard the overhang is off the line.
- In the illustration above, soft would be called on both sides.

# Purpose of the tough/soft call



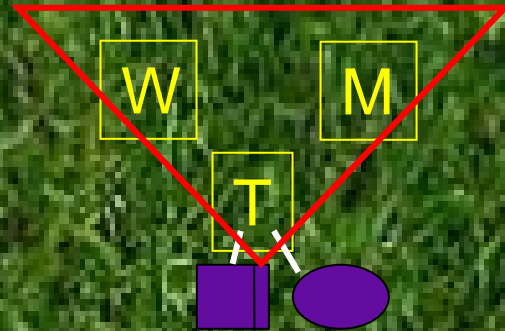
- Tough tells our double read lineman they have an outside blitz threat.
- In our Big on Big protection, the guard will protect the edge blitz.
- The QB will throw hot off the inside backer.
- A soft call tells the uncovered lineman to work inside on his double read

# Purpose of the tough/soft call



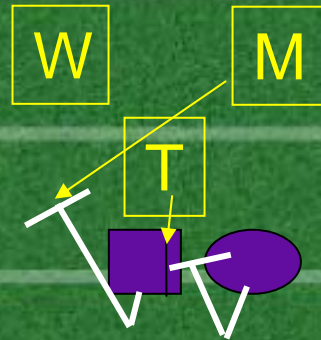
- Our Center and RG will work the 1 tech, to the Mike and Will.
- We are working essentially a man/zone scheme.

# 2 on 3 Matchups



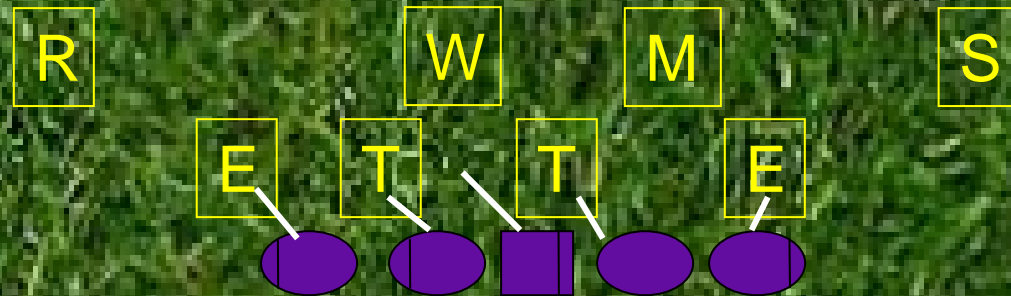
- Vs. most even fronts, we will be faced with a 2 on 3 game.
- If both backers blitz, we will have a built in hot read.
- The C and RG in this case will stalemate the DT with their eyes to backer.
- Thorough game planning will allow us to work this into a 2 on 2 matchup.

# 2 on 3 Matchups



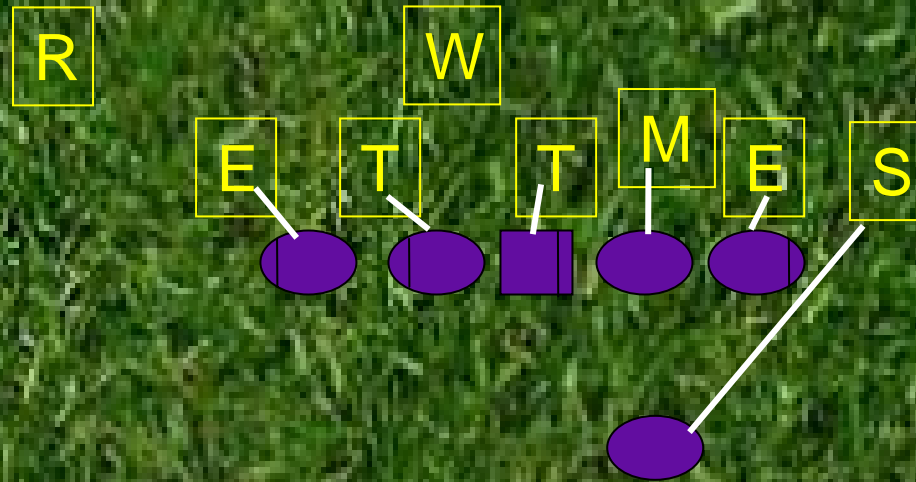
- As our Center and Guard Pass Set, The Punch The near number of the DT.
- They get four eyes to backer and track the most dangerous threat.
- As The Mike comes over the top, the Center comes off.
- We are essentially using our zone combination principles.
- YOU MUST WORK 2 on 3, 3 on 4, and 4 on 5 EVERYDAY!

# If the Center makes a Liggin Call



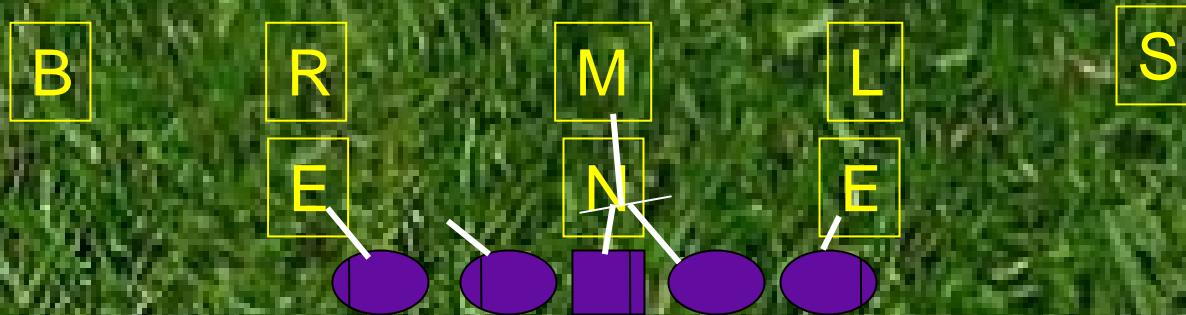
- If our center calls Liggin or Riggin away from the shade, the Guard must work down and come off his double read.
- We now have left the Mike without a lineman tracking him.
- We must have a built in hot for the Mike backer.
- We would want a Riggin call in the case above.

# The Nasty Call Illustrated



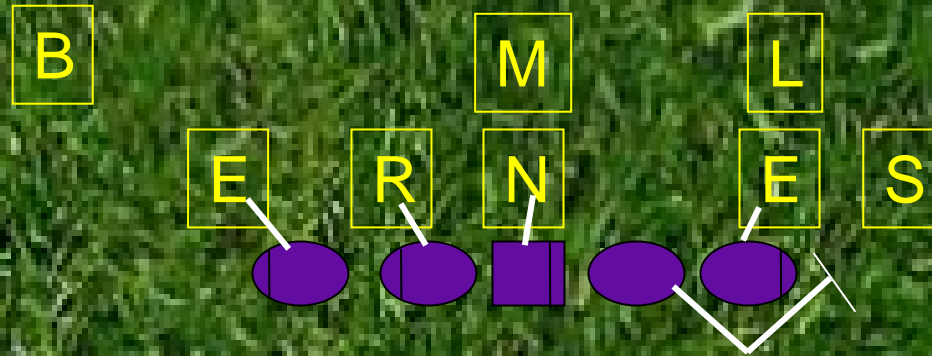
- We must have a hot built in to protect against multiple blitz opportunities.
- You must practice making your nasty call.
- You can work the A into a route as well.
- The nasty call puts you into a 6 Man Protection

# 5 Man Big on Big vs. an Odd Stack



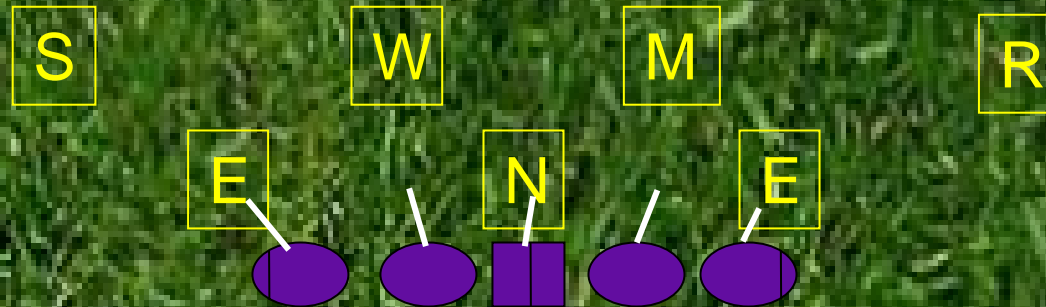
- Vs. a 30 Stack we have 5 to protect 6.
- Both Guards are uncovered, and will work the double read.
- With a soft call to both sides, we will work our protection to favor the quarterbacks off arm.
- In the case above, we would game plan a hot off the L Backer.
- We can check to a 6 Man Protection

# Multiple Blitz Opportunities



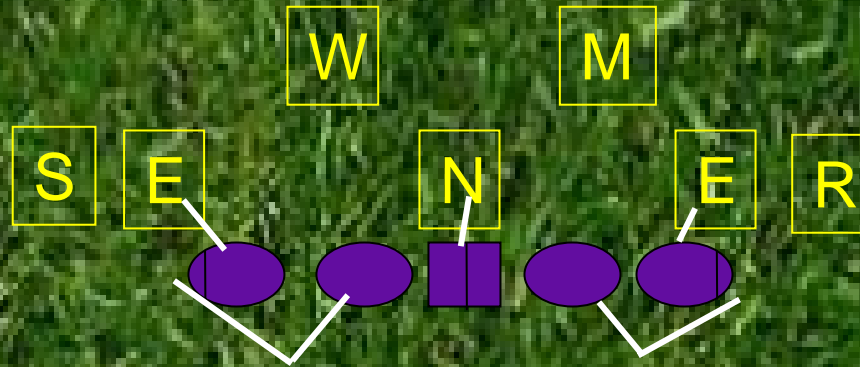
- The RT makes a tough call.
- The RG is the double read player and will work to the edge blitz.
- The center, LG, and LT will block with Big on Big principles.
- We have 5 to protect against the 5 immediate threat players.
- We must have a built in hot.

# 5 Man vs. a 3-4



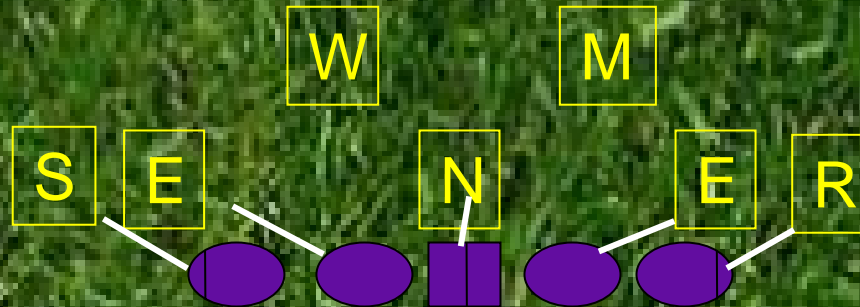
- Vs. a 3-4 with a Nose and two 5 techs, both guards are uncovered.
- The Guards will listen for the tough or soft call.
- We want to protect against the most immediate threat first.
- We have 5 to protect against the 5 immediate threat players.

# 5 Man vs. a 3-4



- With a tough call, the guards would work to the outside with no immediate inside threat.
- We are facing some sort of man with both edge players coming.
- We must account for the inside blitzers with a hot read.

# Out Call Vs. a 3-4

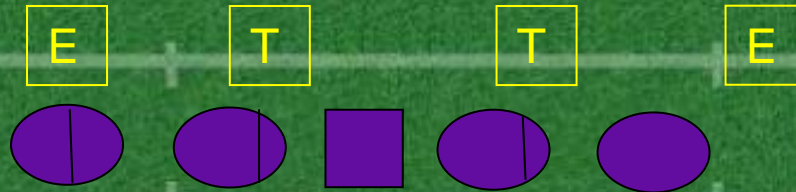


- The out call alerts our offensive line working to the next man out.
- We are anticipating the inside players dropping.
- The inside backers can also be accounted for with hot routes.
- If the tough overhang player doesn't rush, the tackles snap back to help the guards.

# Big On Big Footwork

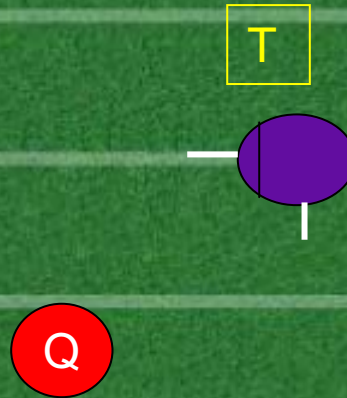
- We must determine where our immediate threat is from the half-man.
- We identify three things:
  - Head Up Inside
  - Outside
  - Wide

# Identifying Threats



- The LT has a head up threat.
- The LG has an inside threat.
- The RG has an outside threat.
- The RT has a wide threat.

# Head Up Inside Threat



- We take a power step to the inside.
- A power step is a 4 to 6 inch step inside to stalemate the inside threat.
- Then we kick with our outside foot and set the anchor.
- The offensive lineman must stalemate the inside rush threat and force the rush back outside.
- We want to keep our shoulders as square as possible as we protect.

# Head Up Inside Threat



- The offensive lineman steps inside to protect against the inside threat.
- Then, works to gain depth.

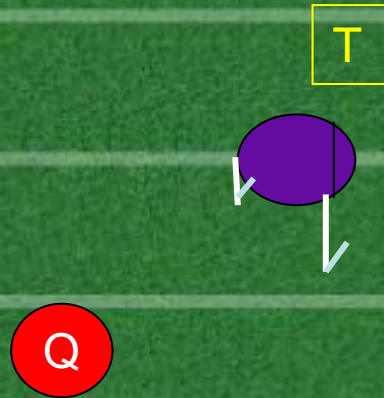
# Washing The Inside Move



- The tackle will step inside and slam the inside move by the defensive lineman.
- We wash the lineman down hard.

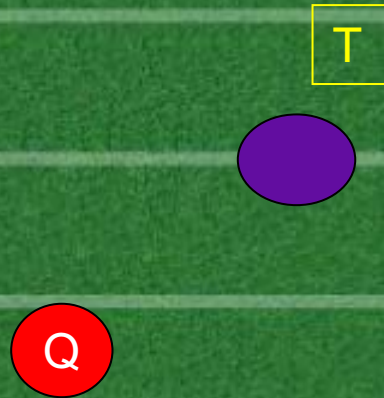
**Coaching Point: Try to keep shoulders as square to the LOS as possible.**

# Outside Threat



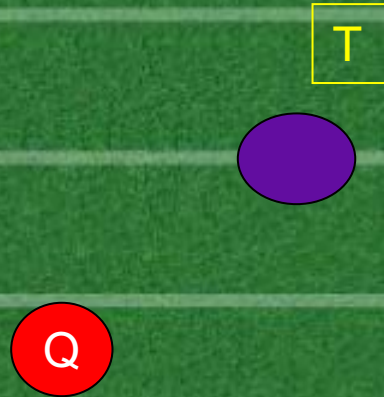
- On the snap, we take a kick step with our outside foot and slide with our inside foot.
- We want to punch the inside jersey number.
- We work our kick slide without giving much ground.
- If the rusher works back inside we will power step to the inside.
- If the rusher works back outside, we are back into our kick slide.

# Outside Threat Illustrated



- We work to maintain the half-man advantage.
- We punch the inside half of the defender.
- We stay as square as we can on the defender.

# Outside Threat with Inside Move



- We kick to gain depth and maintain our half man.
- If the defender works inside we power step to the inside to maintain our half man advantage.
- When the defender works back outside we work back to our kick slide mode.

# Wide Rush

A wide rush means the defender is removed from a shade does not cover any part of our lineman.

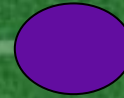


T

- We will take two kick slides and set the angle.
- We have to work to get more depth.
- We will work the inside jersey number for our punch.
- We want to stay square to the LOS.
- If we get an inside move we are back into our power step mode.

# Wide Rush

A wide rush means the defender is removed from a shade does not cover any part of our lineman.

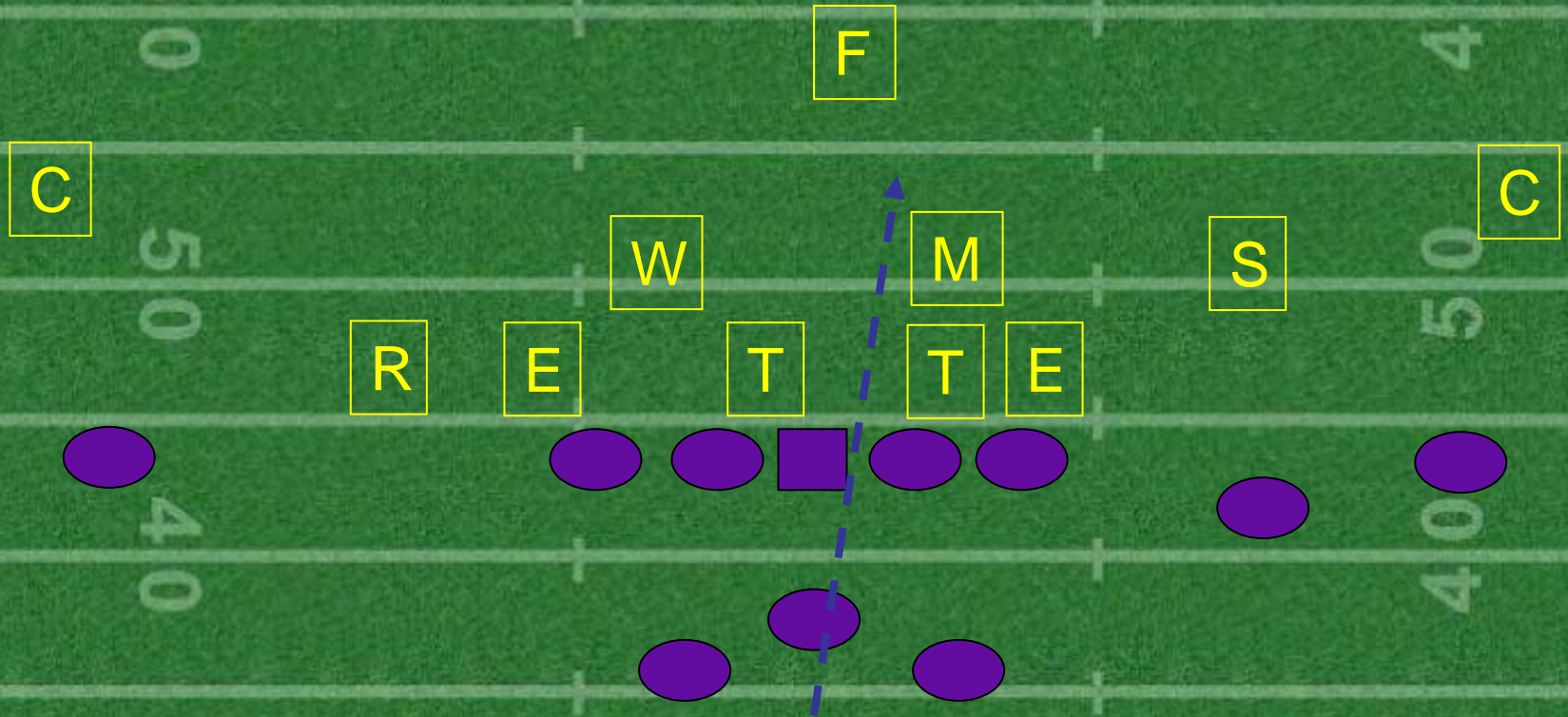


- With a wide defender we are thinking kick-kick.
- We want to keep the pass rusher from getting through our outside shoulder.
- We work with quick feet, staying square.

# Understanding The Wide Rush

- The wide rush can be an end or OLB aligned wide on our tackle.
- The wide rush can be a 9 tech to the tight end side that our tackle will be responsible for.
- Our guards use this technique on a tough call putting them on the edge rusher.

# 5 Man Protection in Action



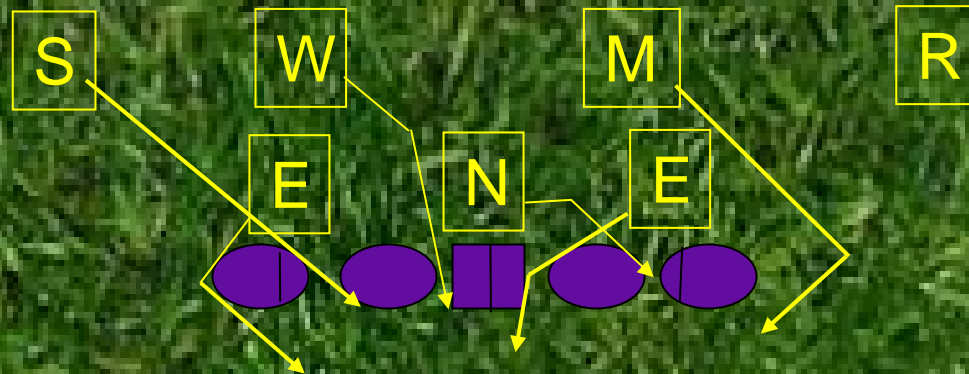
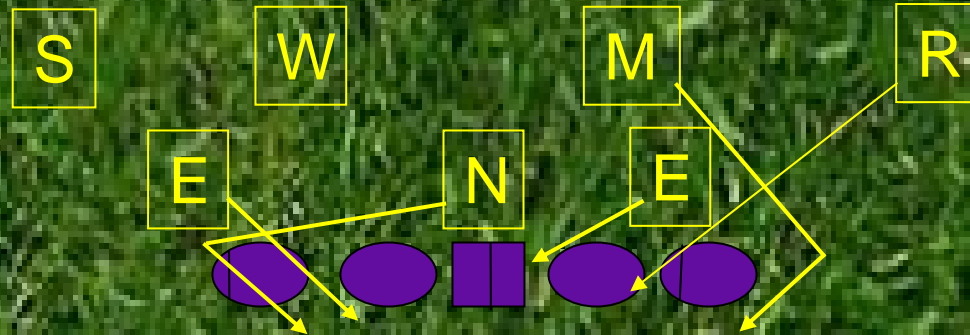
# Big on Big Absolutes

- We kick with our outside foot and set the anchor.
- We slide with our inside foot.
- We power step with our inside foot.
- We must be quick with our feet.
- We punch the inside jersey number.
- Once we punch, we stay punched within the framework.
- Our coaching point to sit back in the chair is to “show our numbers to the defender”
- We don't want to give too much ground.
- We must be relentless.

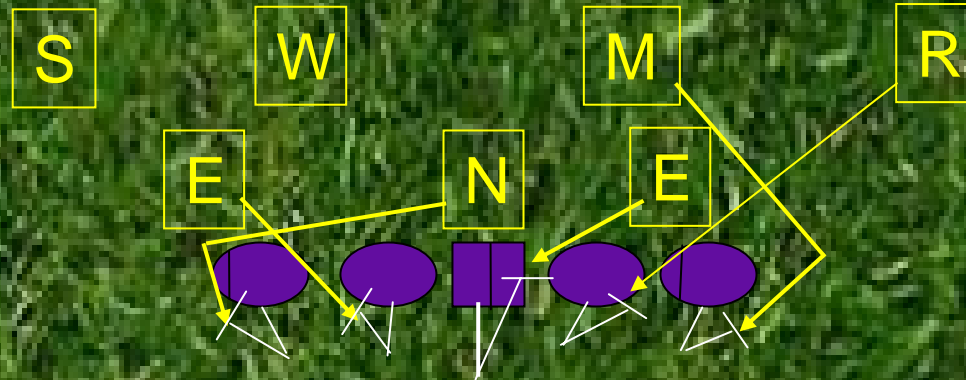
# Protecting Against Fire Stunts

- Defenses are rotating their safeties and bringing 5, 6, and 7 man pressures.
- Backers and defensive lineman are switching gap assignments.
- Edge players will fold back inside and blitz A or B gap.
- Your offensive line must understand what to do when color goes away.
- You must drill your offensive line vs. multiple stunts and blitzes.
- There is no exact science to protecting against fire stunts!

# Examples of 5 and 6 Man Fire Stunt



# Protecting Against Fire Stunts



- Offensive Lineman must keep their head on a swivel.
- The must set a good anchor and keep their feet moving.
- We don't worry about punching until the defender has declared.
- Our offensive line must get a body on a body.
- We must understand the following: When a defender goes away, someone will be replacing.
- We are working a man/zone scheme versus fire stunts.

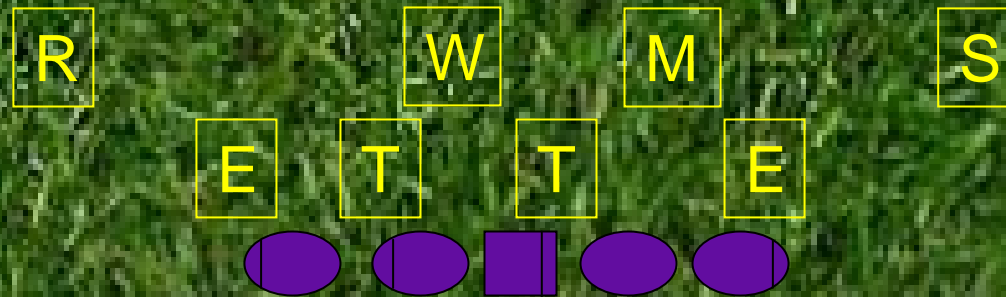
# Absolutes From The Defense

- Teams Are Going To Bring Pressure!
- We can not protect with more than we have to protect.
- When they bring pressure, they are going to be weaker in coverage.
- The defense is going to attack us off the edge.

# Absolutes For Handling Pressure

- Our offensive line must communicate.
- We must keep our head on a swivel and sit in a good base.
- Our offensive line must not chase rushers who are not attacking downhill.
- Our quarterback must understand strengths and weaknesses in our protection.
- Our quarterback must identify his best escape routes.
- We will not be able to protect every blitz. We must work our scramble rules, throw hot, and know when to eat a down.
- We must practice using 2 on 2, 3 on 3, 4 on 4, and 5 on 5.
- We also work 3 on 4, 4 on 5, and 5 on 6.

# Identifying Our Threats

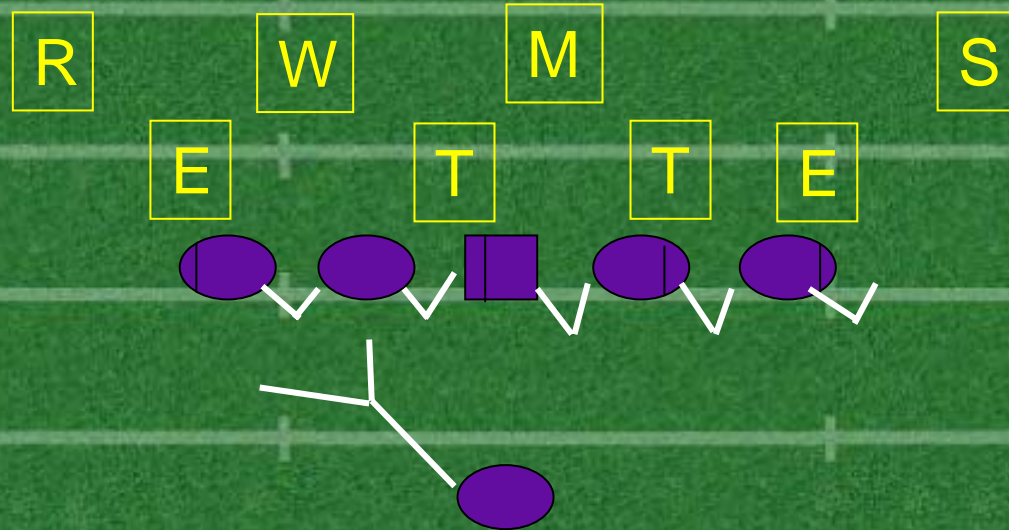


- LT, LG, C, and RT have Outside Threats.
- RG is uncovered with a soft call. He now has an inside threat to help with the center.
- The center makes a Riggin Call.
- The Center and RG now have a 2 on three with the DT, M, and W.

# Slide and Turnback Protection

- Slide and Turnback Protection Schemes are gap protections.
- We identify a slide as a frontside protection.
- Turnback is a backside protection.
- We must have a sixth player in the protection.
- We are protecting a gap, not a man.
- We want to slide the center away from the shade versus Even fronts.
- We want to turnback to the shade vs. Even fronts.
- Our turnback protection should “Build a Wall”

# Slide Protection (To The Right)



- We use our inside zone principals in our slide protection.
- We are blocking the gap threat with no assumptions.
- Our offensive line will drop step to the slide and will gain one yard of depth.
- They will lock on to the first gap threat.
- We are not looking to lock the box.
- The back has a dual read on the backside.

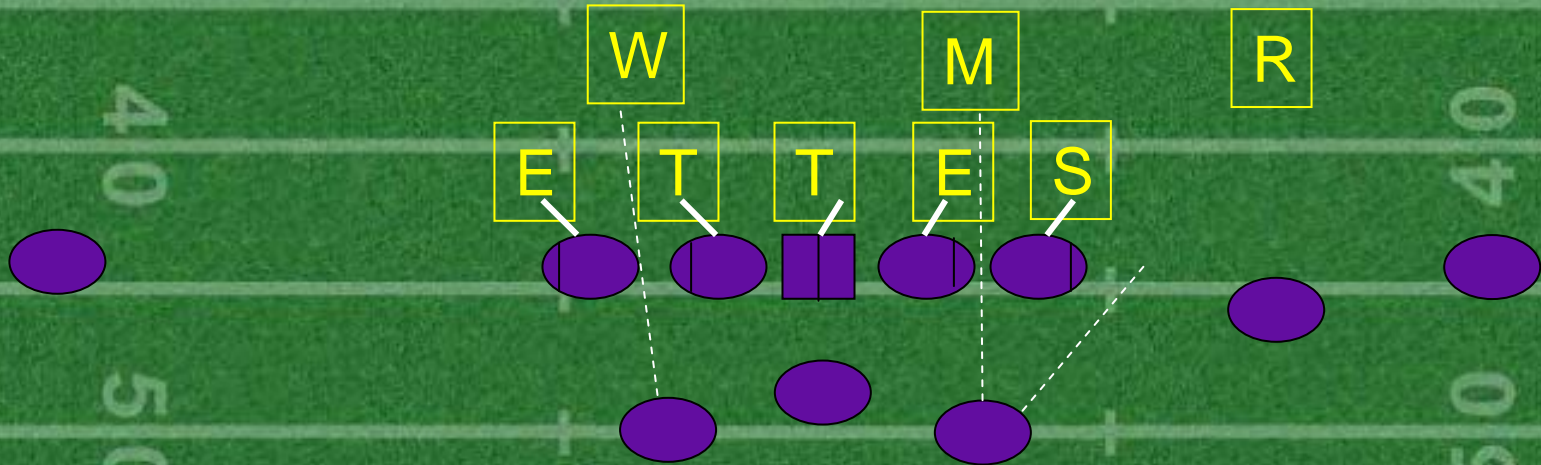


# Seven Man and Max Protections

- When we are expecting heavy pressure and we need to get the ball away, we can keep more players in to protect.
- The only time the TE will stay is when we tag Stay or Max with the protection call.
- We use our Big on Big Principals.
- We want to give ourselves a chance to get the football away.
- We seldom use and 8 man protections, but we have them available.

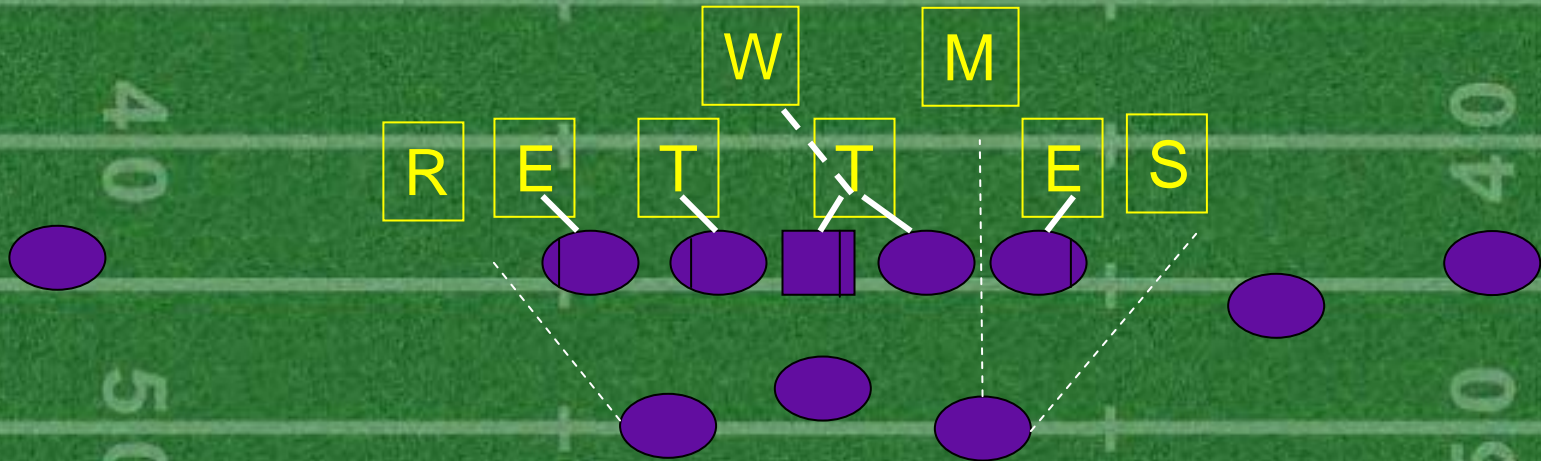


# 7 Man Protection vs. Odd Solid



- Our offensive linemen have a rule that if they are covered they work to the half man advantage.
- The backs now are responsible for the ISLB's.
- If there is no edge threat, the back has a read/release.
- If there is an edge threat, the back has no release and will stay in to protect.

# Using Seven Man Protections



- We must have hot routes built in to our route combinations.
- In the above case, we have the potential for 8 blitzing defenders. We only have 7 to protect.
- Our QB must communicate who is hot.
- We have a frontside hot and a backside hot built in.
- You must be able to take advantage of the defender you can't account for.

# Pass Protection

- We must have more than one protection scheme in our pass game.
- We change QB drop points.
- We work each protection in practice.
- Offensive line must communicate.
- The more they bring, the less they have to cover.
- We must be relentless in our protection of our quarterback.



**James Vint**  
**Offensive Coordinator**  
**Iowa Wesleyan College**  
**601 North Main**  
**Mount Pleasant, IA 52641**  
**Jvint@iwc.edu**

